



# **STATES OF JERSEY PRISON SERVICE**

**HM PRISON LA MOYE**

**ANNUAL REPORT 2009**

# Index

	Page
Governor's Introduction	3
Mission Statement	4
Primary Aims	4
Statistics	5 - 7
Financial Report	8
Prisoner Activities	9 - 15
Staff Training & Development	15
Healthcare	16- 17
Psychology	17- 18
Drug & Alcohol Services	18- 19
Annex A	20- 21
Annex B	22

## **Introduction**

2009 proved to be a year of significant progress at H.M. Prison La Moye and I am pleased to report on the performance of the Jersey Prison Service over this period.

Providing learning opportunities and skills development for prisoners continued to be high on the agenda and the achievements documented in this report are testament to the distance travelled in this area of our business in a relatively short time period.

In regard to facilities, Phase 3 of our new build programme was completed and two new accommodation wings (K & L) came on stream. This brought an end to “slopping out” and all prisoners now have access to in-cell toilet facilities. This Phase also included a new Sports and Fitness Centre, which consists of a large sports hall, a weight training room, a cardio-vascular fitness suite and a classroom.

On 1<sup>st</sup> June 2009, the uniformed staff moved to an average net 37 hour working week, with paid meal breaks incorporated, extending their time on site to 40 hours. This necessitated the creation of new attendance patterns for all grades and this was achieved, working in partnership with the Prison Service Association. The new attendance patterns introduced more efficient deployment of staff resources.

With reference to staffing, while I was still unable to achieve the full budget to recruit to the approved Full-Time Equivalent for the Jersey Prison Service, additional funding was provided part way through the year to facilitate the reduction in working hours and allow additional Prison Officers and Operational Support Grades to be recruited. By the end of the year, La Moye was only two officers short of its full complement requirement; its healthiest staffing position for many years.

Prisoner numbers remained relatively static, with a daily average of 184 and peaking at 199 (representing a marginal increase on 2008).

It was a particularly demanding year in regard to managing prisoners with a history of mental health problems or personality disorders. Several very difficult cases came under our management during the year and while we received support and advice from our colleagues in Health and Social Services, I have to commend the prison staff from all disciplines who managed these individuals with a high level of professionalism and compassion.

With reference to budget management, while the financial report reflects an over spend, this was agreed in advance and the outturn was within a fraction of a percent of that projected.

In conclusion, the Jersey Prison Service has benefited from very good support from external partners and stakeholders in 2009 and this has assisted us in delivering a very good performance.

**Bill Millar**  
**Governor**

## **MISSION STATEMENT**

- H M Prison La Moye will provide a healthy, safe, secure and stimulating environment for all who live and work here. Prisoners will be encouraged to address their offending behaviour and to become involved in education and work related training, which will enable them to live a law-abiding and purposeful life in custody and after release.
- Supportive relationships with families will be facilitated in order to maintain the positive links that will ensure a successful return to the community. In partnership with other agencies the prison will provide effective ways to reduce crime and its resultant social and economic costs.
- Our aim is to be a model of best practice and an example to other prisons.

## **PRIMARY AIMS**

- Protection of the public by keeping in custody those persons committed to us by the Courts in a safe, decent and healthy environment.
- Reduce re-offending by providing constructive regimes, which address offending behaviour and which improve educational and work skills.
- Supporting offenders' positive relationships with their families in order to assist their successful return to the community.

## 1. STATISTICS

### 1.1 Prisoner Accommodation

- 1.1.1. A breakdown of the prisoner accommodation is detailed below. Further to the opening of new cellular accommodation in December 2009, this represents a significant change to previous years, with all cells now benefiting from integral toilet facilities.
- 1.1.2. A, B, G and E Wings have now been mothballed and all prisoners are now in H, J, K & L Wings, the latter two being parts of a newly constructed building.
- 1.1.3. The new Wings also provide recreation facilities, interview rooms and healthcare rooms for nursing triage and drug administration.
- 1.1.4. The Young Offenders are located on the top level of K Wing. This has been screened from the lower wings to allow it to operate as an independent unit.

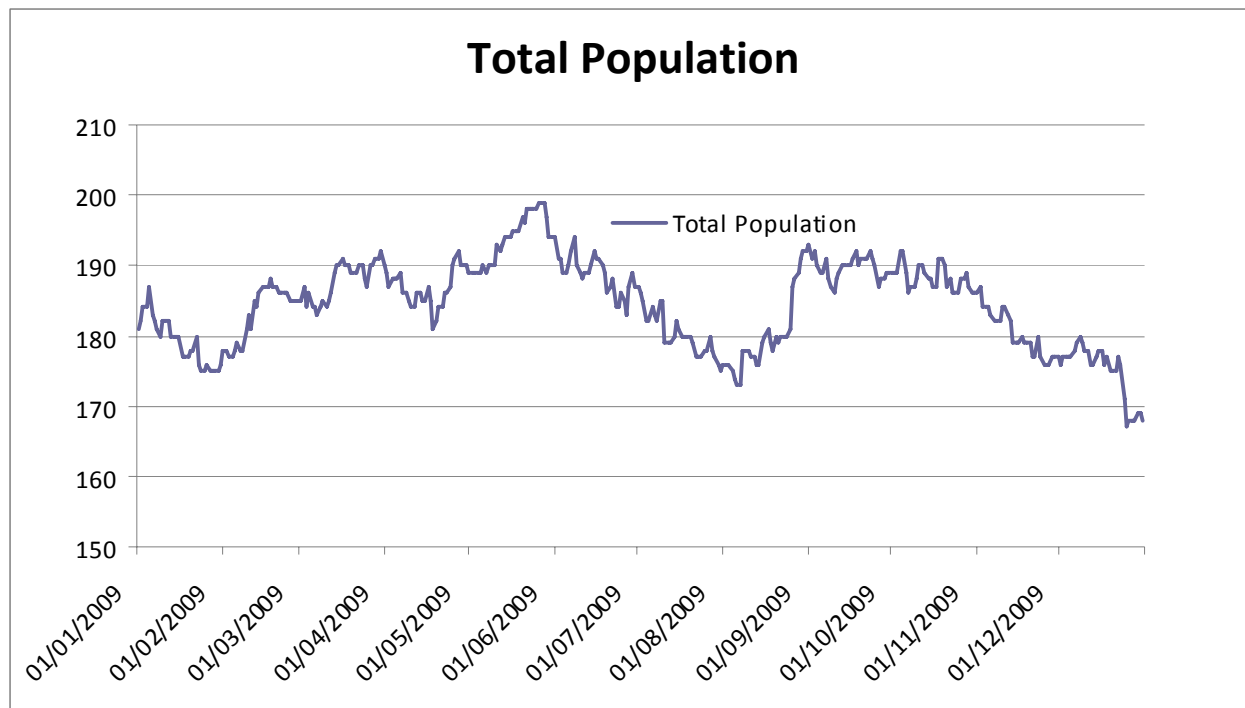
### 1.2 Breakdown of Prisoner Accommodation (from December 2009)

#### 1.2.1

Wing	No. of Cells	No. of Prisoner Places	No. with access to in cell toilet
<b>H</b> <i>(Females)</i>	31	35	35
<b>K3</b> <i>(Young Offenders)</i>	20	26	26
<b>J Wing</b> <i>(Vulnerable Prisoners)</i>	41	62	62
<b>K 1&amp;2</b> <i>(Adult Male Mainstream)</i>	26	31	31
<b>L Wing</b> <i>(Adult Male Mainstream)</i>	60	87	87
<b>Total</b>	178	243	243

### 1.3 Total population during 2009

#### 1.3.1.



#### 1.3.2.

Population	2004	2005	2006	2007	2008	2009
Maximum Daily Population	198	181	189	200	193	199
Minimum Daily Population	159	158	157	172	171	167
Average Daily Population	171	172	174	183	181	184

#### 1.3.3.

Male Reception	270	Sentenced to imprisonment or youth detention	142
Female Reception	26	Non custodial disposals	102
		In custody but on remand on 31 <sup>st</sup> December	30
<b>Total Receptions</b>	<b>296</b>		
Transferred to UK	10	<b>Total</b>	<b>274</b>

#### 1.3.4.

Length of Sentence	
<= 1 Month	10
>= 1 Month < 6 Months	30
>= 6 Months <= 12 Months	22
>= 12 Months <= 24 Months	23
>= 24 Months < 60 Months	29
>= 60 Months < 72 Months	7
>= 72 Months	6
Life	0
<b>Total</b>	<b>127</b>

#### 1.3.5.

Young Offenders	Male	Female	Total
Number of prisoners < 21 Years received into Youth Detention	47	9	58
Number of prisoners < 18 Years received into youth Detention	15	8	23

1.3.6.

#### **Previous Convictions**

Receptions known to have been previously imprisoned	121
---	-----

1.3.7

#### **Countries of Origin**

Jersey Born	149
United Kingdom	89
Portugal	25

1.3.8.

#### **Temporary Releases**

Total Temporary Releases	2936
Work Experience Releases	2633
Number of Prisoners released	101

### **1.4 Discipline**

1.4.1. During the year, 381 reports (several for multiple offences) were submitted for contravening prison rules. 96 adult prisoners were involved, (92 male, 4 female) and 17 young offenders, (14 male, 3 female). Of these 11 were referred to the police for investigation.

1.4.2. Of the reports submitted against adult prisoners 50 had more than one report, the highest being one with a total of 38. Of the reports submitted against young offenders, 10 had more than one report, the highest being one with a total of 8.

1.4.3. The longest period in cellular confinement was 21 days and the longest period of loss of any other privilege was 35 days.

1.4.4. A breakdown of the punishments awarded during 2009 is attached at annexe A.

### **1.5 Electronic Monitoring**

1.5.1 A total of 16 prisoners were granted release on the TRMS during the year, all were male. One was recalled to prison for breaching a licence condition.

### **1.6 Staff**

1.6.1. On 31<sup>st</sup> December, 2009 the Prison Staff complement was as follows:-

Governor	1
Deputy Governor	1
Senior Unit Manager	2
Unit Manager	5
Senior Officers	15
Catering Officer (including a manager)	6
Prison Officer	72
Nurse Officer (including a manager)	6
Operational Support Grade	21
Engineer Officer (including a manager)	5
Civil Servants	22
Civilian Horticultural Officer	5
Craftsman	6
PTIs (including a manager)	4

## 2. FINANCIAL REPORT FOR 2009

### 2.1

	<b>BUDGET 2009</b>	<b>ACTUAL SPEND / INCOME 2009</b>	<b>VARIANCE (OVER) / UNDER</b>
STAFF	£7,859,554	£7,936,931	(£77,377)
NON STAFF			
<b>Premises + Maintenance</b>	£595,000	£817,734	(£222,734)
<b>Supplies + Services</b>	£1,598,700	£1,601,216	(£2,516)
<b>Administrative Costs</b>	£54,000	£78,721	(£24,721)
<b>Cost of Prisoners in UK</b>	£300,000	£260,135	£39,865
Total Non Staff	£2,547,700	£2,757,806	(£210,106)
Total Expenditure	£10,407,254	£10,694,737	(£287,483)
Less Income			
<b>Prison Industries</b>	(£330,000)	(£392,070)	£62,070
<b>Rent</b>	(£100,000)	(£106,932)	£6,932
Net Expenditure	£9,977,254	£10,195,735	(£218,481)

2.1.2. Pre-agreed overspend (resulting from a transfer of miscoded capital to revenue expenditure) of £218,481 was met from general under spend in other areas within Home Affairs at year end.

2.1.3. Net revenue expenditure for HM Prison was £10.2 million, of which £7.94 million (78%) were staff costs.

2.1.4. The cost of prisoner's food was £3.39 per prisoner per day.



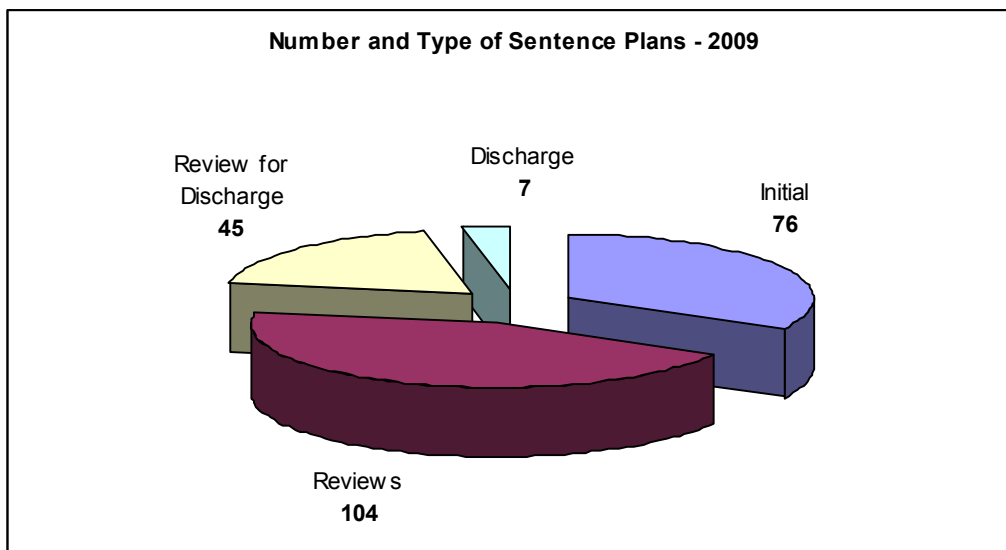
### 3. PRISONER ACTIVITIES

#### 3.1 Sentence Management

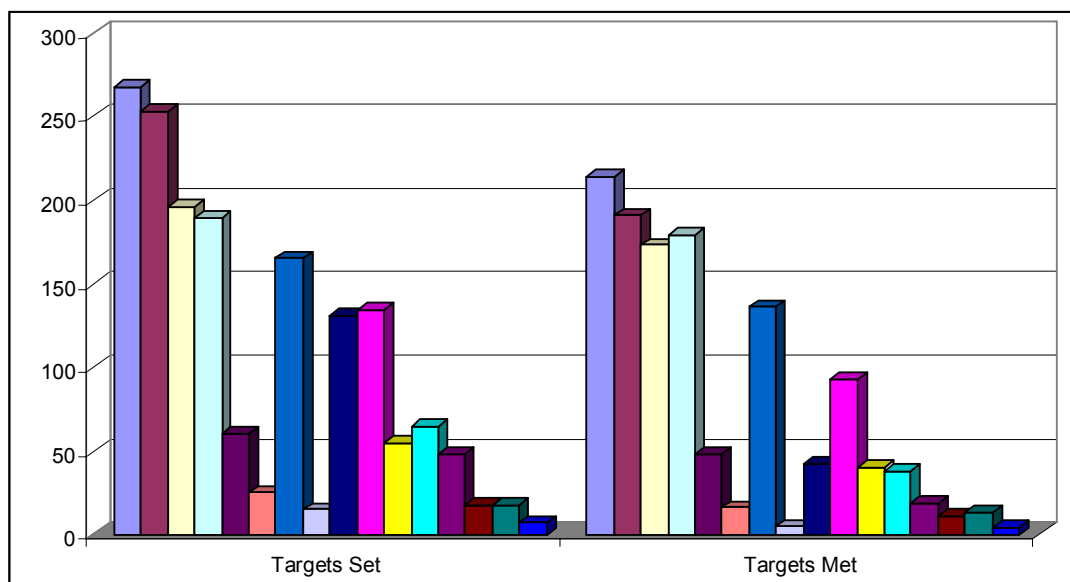
3.1.1. During 2009 a total of 232 sentence plans were completed for convicted prisoners in La Moye, a breakdown of which is set out below. The discharge plans relate to very short term prisoners; where there is insufficient time to conduct more than one plan before discharge.

3.1.2. Throughout the year only two eligible prisoners did not engage with the sentence planning process at any stage and three prisoners participated for a period but withdrew from the scheme before end of sentence.

3.1.3.



3.1.4.



Alcohol and Drugs	Learning and Skills	Employment
Family/Social Support	Financial Situation	Housing/Accommodation
Institutional Behaviour	Life Skills	Mental/Physical Health
Offending Behaviour	Resettlement/Legal	Use of Violence
Vulnerability/Self Harm	Victim s	Risk of Harm
Other		

### 3.1.5.

	Targets Set	Targets Met	Not Available	Not Met	Ongoing
Alcohol and Drugs	268	214	2	22	30
Learning and Skills	253	191	12	12	38
Employment	196	173	0	9	14
Family/Social Support	189	179	0	0	10
Financial Situation	60	48	0	0	12
Housing/Accommodation	25	16	0	1	8
Institutional Behaviour	165	136	0	21	8
Life Skills	15	5	1	0	9
Mental/Physical Health	131	42	0	1	88
Offending Behaviour	134	93	1	11	29
Resettlement/Legal	55	40	1	5	9
Use of Violence	65	38	8	3	16
Vulnerability/Self Harm	48	19	0	0	29
Victims	18	11	0	3	4
Risk of Harm	18	13	0	1	4
Other	7	4	1	1	1

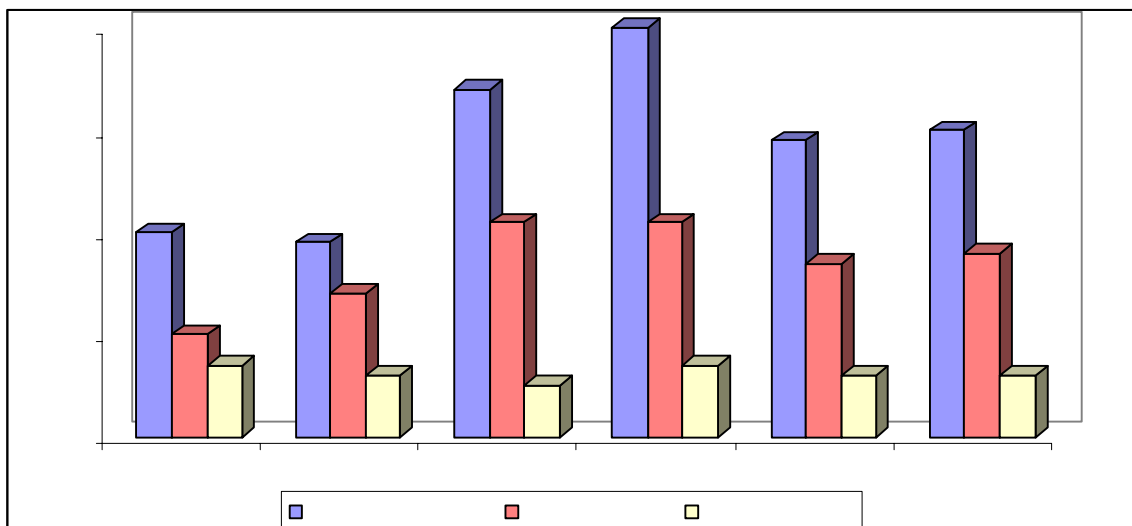
## 3.2 The Market Place

3.2.1. The Marketplace is viewed as a valuable resource by both prisoners and attending external agencies and attracts numerous applications from the various Wings in the prison. The event is held every two months and six of these events took place during 2009. A total of 101 prisoners attended appointments and feedback indicated that they all found the information and advice given very useful. The purpose of the Marketplace is to give prisoners access to external “resettlement” agencies as they are nearing the end of their sentence in order to assist them in finding accommodation or employment and/or to give general welfare advice.

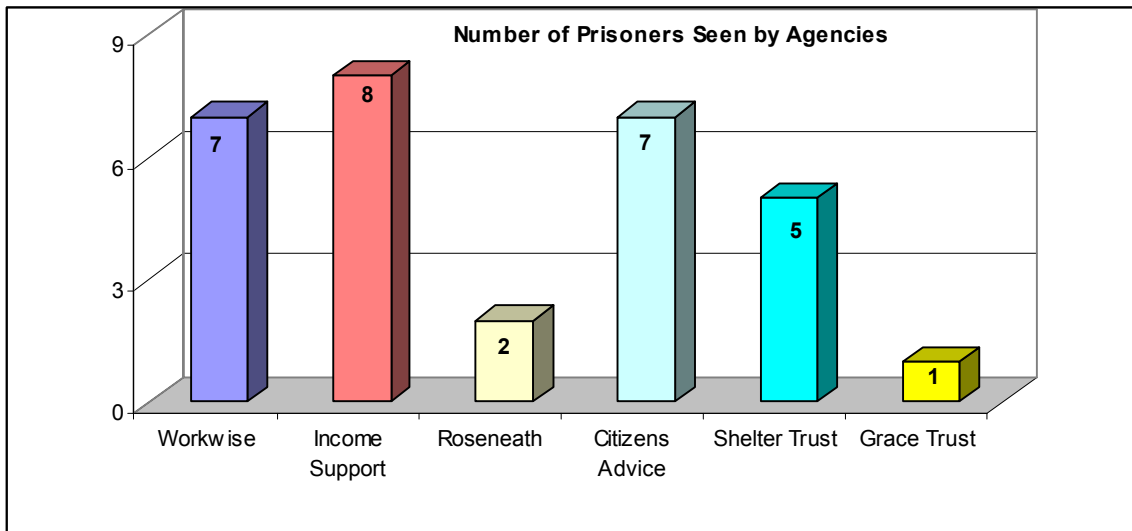
3.2.2. An average of 7 external agencies attended each event, including:

Workwise & Careers  
 Housing Agencies  
 Grace Trust  
 Roseneath  
 The Shelter  
 Citizen’s Advice Bureau  
 Community Banking

### 3.2.3.



### 3.2.4.



**Marketplace By Wings**

	Total	A	B	C	E	G	H	J
Workwise	7	2	0	0	2	0	1	2
Income Support	8	1	0	1	1	2	0	3
Roseneath	2	0	0	0	0	1	0	1
Citizens Advice	7	0	0	1	0	0	0	6
Shelter Trust	5	1	0	0	3	0	0	1
Grace Trust	1	1	0	0	0	0	0	0

## 3.3 Learning and Skills Department

3.3.1 At the end of 2009 the Learning and Skills Department consisted of the following sections:

General Education	4 qualified teachers 1 librarian/information resource assistant
Vocational training	1 Vocational Training and Workshop Manager 4 craftsman instructors 1 Industrial Cleaner
Horticultural Compound	1 Horticulture Manager 3 Horticultural instructors
Physical Education Department	1 PE Manager 3 PE Officer Instructors

## 3.4 Facilities

3.4.1. The Department operates in the following areas within the Prison:

- Vulnerable Prisoner Unit (VPU) Training workshop
- Mainstream Prisoner Workshop
- Carpentry Production Workshop
- Female recycling Workshop
- VPU Recycling Workshop
- Horticulture Compound
- Library and Education Centre (LEC)
- Association Rooms on each Wing – for Basic Skills and ESOL Lessons
- Fitness Centre and Sports Hall (opened in December 2009)

### 3.4.2. Developments in 2009:

- The most significant development in 2009 was the opening of the Fitness Centre and Sports Hall in December.
- Major improvements were made to the training and recycling workshops by the installation of heating, ventilation and air extraction systems; this was part funded by a grant from Economic Development of £30K.
- Using some of the money earned from the carpentry production workshop, the workshop area has been made more secure by the erection of a screening fence.
- Two large polytunnels and two small polytunnels were repaired and covered in the horticultural compound.
- Progress has been made with the investment in the Prisoner IT Network: new servers have been installed, supporting an intranet and Education Learning Platform, accessed using biometric fingerprint readers.

## 3.5 Learning opportunities

### 3.5.1 A core curriculum is accessible to all prisoners. This consists of:

- 1 Basic Skills lesson per week
- 1 ESOL lesson per week
- 1 ICT lesson per week
- 1 Open Learning session per week
- 1 Art lesson per week
- 1 library session per week, plus one other for those engaged in learning programmes
- A programme, offered in rotation, of Level 1 vocational training in painting, carpentry and brickwork that consists of a 2 week full-time course and a 6 week full-time course
- Industrial Cleaning Training for all prisoners employed as cleaners in the Prison
- 3 recreational, staff supported, Fitness Centre sessions per week and 2 recreational, staff supported Sports Hall sessions per week
- A programme, offered in rotation, of accredited sports courses in a variety of disciplines, some using Community Sports Development Officers, others linked to gaining vocational training qualifications

3.5.2. Teaching the basic skills of literacy, numeracy and ICT has been the main priority. Although these remain essential, the progress that has been made in 2009 in providing a range of learning programmes has enabled the equally important functional skills of communication and teamwork to be added as principal objectives. The extension of learning programmes and vocational training has created the opportunity to embed basic skills into all the courses and programmes the Department is running. This provides an alternative to teaching discrete basic skills, and is shown by academic research to be highly effective in raising the standards of all functional skills.

3.5.3. The Fitness Centre and Sports Hall opened at the end of the year, replacing the old gymnasium. The new facility has provided the opportunity to bring physical activity at the prison up-to-date in terms of the ethos applied and the equipment used. The intention is to make physical activity accessible to all and to offer programmes that focus on fitness and healthy lifestyle.

3.5.4. The Learning and Skills Department have accreditation with several examination boards, allowing the Prison to administer and invigilate a wide range of public examinations. Accreditation is in place for: Scottish Qualifications Authority, Central YMCA Qualifications (CYQ), Open College Network (OCN), the European Computer Driving Licence (ECDL), British Institute of Cleaning Science (BICS), Oxford, Cambridge and RSA Examinations (OCR) and Assessment and Qualifications Alliance (AQA).

3.5.5 All new prisoners received an education induction interview within the first week of entering the Prison. These interviews link into the sentence planning process. Individual Learning Plans were completed for 60% of those admitted. The aim is to increase this figure to 75% in 2010 by requiring all prisoners embarking on learning and skills programmes to complete a Target Skills assessment.

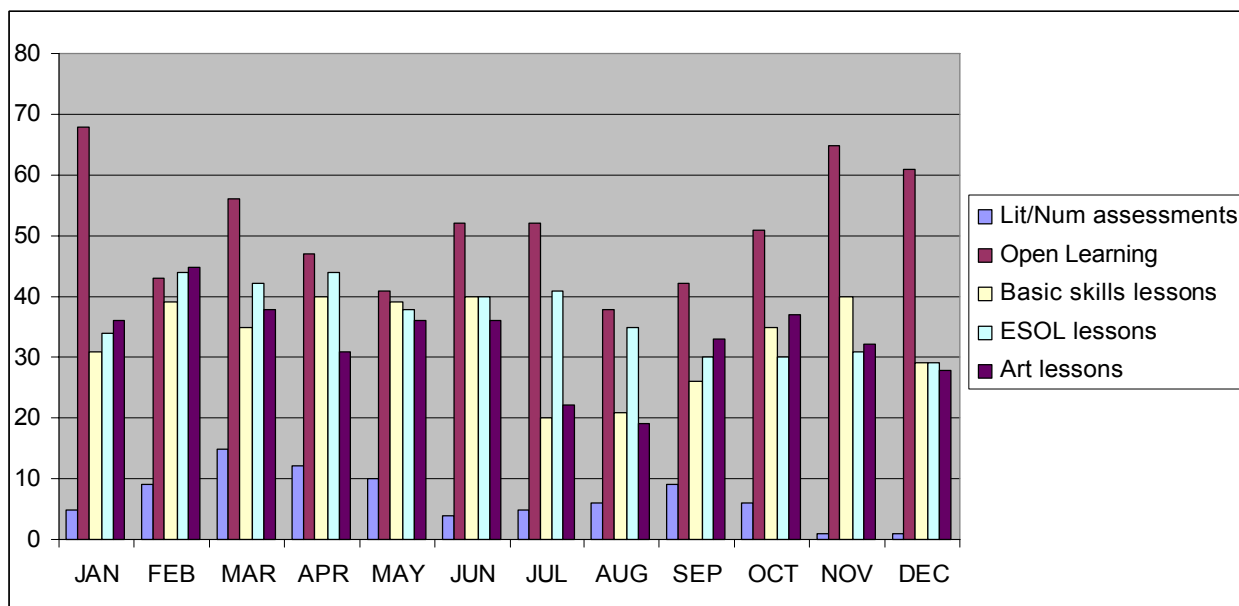
3.5.6. The Library and ICT facility is accessible twice a week to all Wings on a fixed timetable. It had 4359 visits from prisoners and 4361 books borrowed during 2009.

3.5.7. Prisoners have been supported in a variety of Open Learning Options, ranging from Level 4 Open University Courses to those studying at Level 1. During 2009 80% of the OU funding was received from ESC grants and 19 prisoners course secured Prison Education Trust funding. Of the 8 prisoners engaged on OU courses 2 of them in 2009 achieved 120 credits, which is equivalent to successfully completing the first year of a degree.

3.5.8. A range of course programme of courses continue to be offered to all prisoners on a rotational basis. Short courses have been provided in French, Spanish, Art, Football, Cricket, Financial Management, and Healthy Eating.

### 3.6 Total numbers attending core education courses 2009

#### 3.6.1. Total numbers attending core education courses



3.6.2. During 2009 127 separate, individual prisoners attended art lessons, 126 attended Basic Skills lessons, 61 attended ESOL lessons and 44 attended Level 1 ICT lessons

### 3.7 Examination Results for 2009

See annexe B

### 3.8 Staff development

3.8.1. In March 2009 14 staff were awarded the Preparing to Teach in the Lifelong Learning Sector (PTLLS) Certificate, which finished on 10 December 2008. In the autumn of 2009 4 staff

successfully completed a CYQ Level 2 Gym Instructor course – 3 of these have become the PE Officers.

3.8.2. The teaching staff attended some courses offered to teachers working for ESC; this has included critical skills training and selected courses dealing with strategies for teaching those with Special Needs.

3.8.3. A strong link with Highlands College has enabled the vocational training staff at Highlands to provide regular informal support for the Prison instructors. The Quality Assurance Administrator at Highlands provides formalised support for the City and Guilds courses.

### **3.9 Work related learning**

3.9.1. The opportunities for work related learning have been extended and the preparations have been completed for the introduction of National Vocational Qualifications early in 2010 into the prisoner work areas of the kitchen and compound. British Institute of Cleaning qualifications are already available for those allocated work cleaning on the wings. The carpentry production workshop employs 10 prisoners who are involved in tasks that utilise the skills they have picked up on the City and Guilds craft courses.

3.9.2. The horticulture compound employs between 15 and 25 prisoners, depending on the season. Learning opportunities in this area will be formalised in 2010 with the introduction of National Vocational Qualifications.

### **3.10 Employment**

3.10.1. The Activities and Employment Board was established in September 2008. The policy ensures equality of opportunity for all prisoners against identified criteria for employment and education places. The rates of pay do not disadvantage prisoners attending educational programmes and the learning and skills provision is designed as an integrated part of the whole regime.

3.10.2. The carpentry workshop produced a range of garden furniture products, sold mainly to other States Departments but also sold by word of mouth to private individuals. The unit also supported a number of community projects in schools.

3.10.3. Despite a downturn in the orders from Ransom's Garden Centre, the horticultural unit maintained sales comparable to 2008. The bedding and plants were of a particularly high quality and the hanging baskets seen at the Parish Halls of St Brelade and St Ouen received special commendation. During the year 30 first prizes were won at the Royal Jersey Agricultural and Horticultural Society shows and the unit contributed to the winning Jersey stand at the Chelsea Flower Show.

3.10.4. The arrangement with Transport and Technical Services to run the recycling workshop was extended and a formal service agreement drawn up. The workshops are overseen by the Workshop Manager and managed on a daily basis by the wing staff. The main source of employment is the dismantling, sorting and recycling of electrical items and computers. This is done in partnership with the Transport & Technical Services department, who arrange all the delivery and collection of the items to be recycled. They also supply the unit with the tools required for the job, as well as paying the prisoners wages.

3.10.5. Additional opportunities for work are provided by the spaces that occur from running full-time vocational training courses - these are active throughout the year, taking prisoner temporarily out of work and so allowing others to take their place, adding to the productive activities available to prisoners. Training courses in brickwork, carpentry, and painting run for 2 weeks or 6 weeks in

length, and are accredited by City and Guilds. The maximum possible on such courses at any one time has been 17, rising to 25 in 2010, following further improvements in the workshops.

3.10.6. The numbers shown in the table 1.1.8 below show the numbers of prisoner jobs available by wing. Figures have not been entered for licensed workers and those in the Labour Pool as these undergo regular changes. The average rate of employment for all those wishing to work in 2009 was between 75% and 80%.

### 3.10.7. Employment availability by wing

Wing	Wing cleaning	Off wing cleaning	Other wing work	Compound work	Recycling workshop	Carpentry workshop	Kitchen
H	3	1	3		8		
J	6	3	13		12		
YOI	4		2				
K1 + K2	4	6					
L1 + L2	7	1	6	15-25		10	20
Total	24	11	24	15-25	20	10	20

- Off wing cleaning covers administrative areas and non-wing areas; for example, the main link corridors and classrooms
- Other Wing based work includes a laundry and servery for each area; in addition J wing has Tea Pack and Pot washing work on the wing
- Compound – employment opportunities vary in the horticultural compound from a minimum of 15 in the winter to a maximum of 25 in the summer.
- Recycling – the workshops have a maximum capacity of 12 for J wing and 8 for H wing.
- Carpentry production – maximum 10
- Kitchen – maximum 20 (two teams of 10 working alternate days)
- Out on license – this will vary according to the sentence mix on the wing
- The Labour Pool represents those out of work. All convicted prisoners are expected to work if it is available. Remand prisoners have a choice

## 4. STAFF TRAINING AND DEVELOPMENT

### 4.1 Staff Appraisal System

The States Performance Related Assessment (PRA) policy is now well established and the level of compliance for 2009 was over 95%.

### 4.2 Staff Training Hours

#### 4.2.1.

2006	2007	2008	2009
523	3098	4048	4914

In addition to the above, 6569 hours training was delivered to new recruits in 2009.

4.2.2. 5 operational managers from the prison commenced the Modern Manager Development Programme, 3 at level 3 and 2 at level 5.

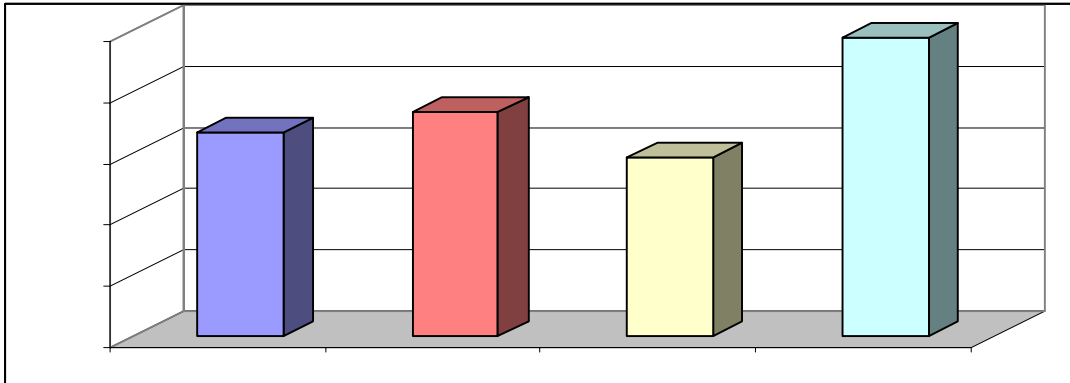
## 5 HEALTHCARE

### 5.1 Developments in health care provision/requirements for 2009 were:

- The frequency of alcohol detox was up by 58%.
- There was a 31% increase in reception health screen interviews.
- A significant increase in the number of nurse led clinics, one of which resulted in early diagnosis of prostate cancer.
- The in-house nursing team offered swine flu vaccinations to all staff and prisoners.
- Healthcare facilities are now available in each prisoner accommodation wing.

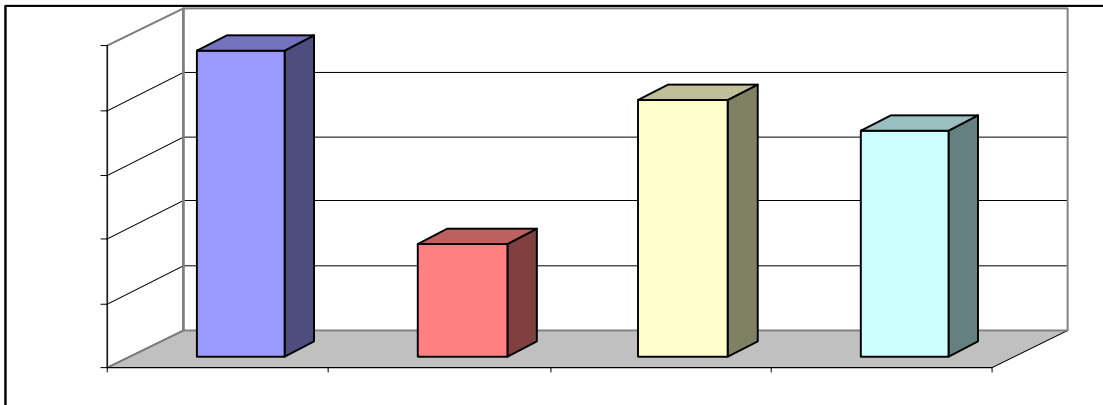
### 5.2 Healthcare Clinics

#### 5.2.1. GP Clinics

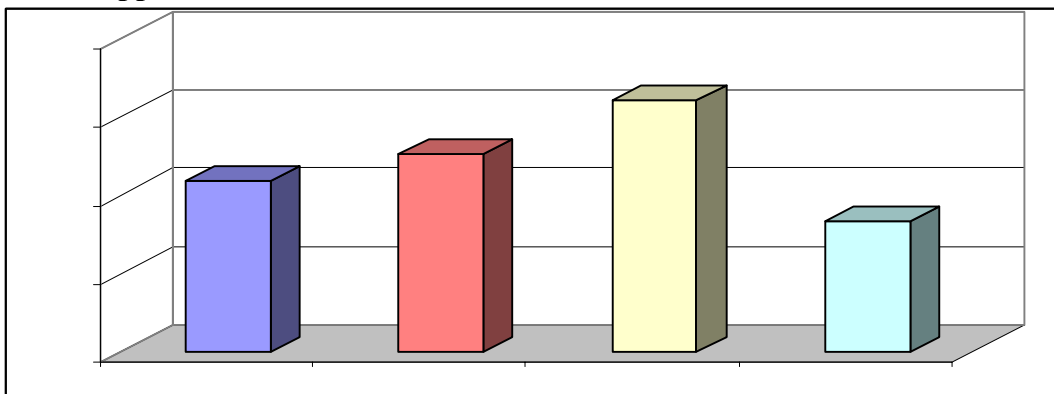


5.2.2. The GP clinic continues to be a much sought after clinic but more healthcare staff and nurse led clinics are now in place which should result in a reduction in GP consultations in 2010.

#### 5.2.3. Psychiatrist Appointments



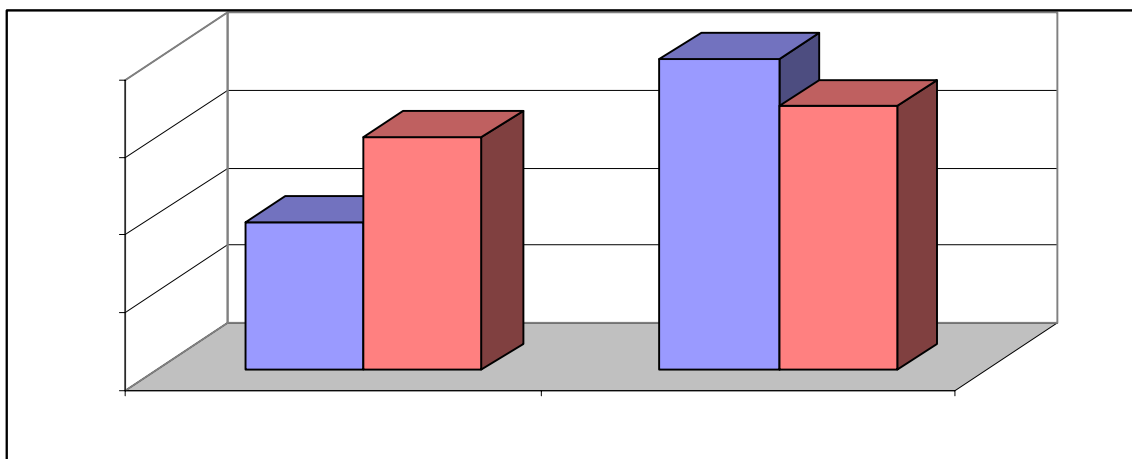
#### 5.2.4. Dentist Appointments





5.2.5. The dentist visits routinely once a week but the demand for this service is such that it is sometimes necessary to book a second session

### 5.2.6. Alcohol and Drug Detoxification Programmes



The number of alcohol detox increased in 2009, this was essentially due to two individuals being released and admitted several times

## 6 PSYCHOLOGY

**6.1** The Psychology Department consists of a Principal Forensic Psychologist and a Psychological Assistant. The Principal Psychologist also manages the Safer Custody Officer and thus has oversight of the violence reduction/Anti-bullying and Suicide/Self-harm policies.

**6.2** A major function of the department is the assessment of prisoners with a view to identifying their risk factors and criminogenic needs and designing and delivering interventions to reduce their individual risk of re-offending. Assessments of risk are also carried out to inform decisions, for example for release on temporary licence. The Principal Psychologist serves on the Temporary Release Panel and attends multi-agency risk assessment meetings.

### 6.2.1

Release on Temporary Licence Risk Assessment Reports	Sentence Contributions	Plan	Induction Interviews (March to December)
110	238		132

6.2.2 568 one-to-one interventions were delivered to prisoners during 2009.

6.2.3. One prisoner returned from a prison in England having completed an accredited sex offender treatment group-work programme and one other prisoner was transferred to undertake the programme.

**6.3** The department contributes to the delivery of staff training and awareness. As an In-service Counsellor, the Principal Psychologist undertakes counselling and support work with staff referred by Human Resources or senior management.

**6.4** During the year the Principal Psychologist was instrumental in introducing the HCR-20 Violence Risk Assessment Scheme to agencies across Jersey. She delivered training in this assessment tool to staff from the Police, Probation Service, Psychiatric Service and Learning Disability Team, as well as Prison staff.

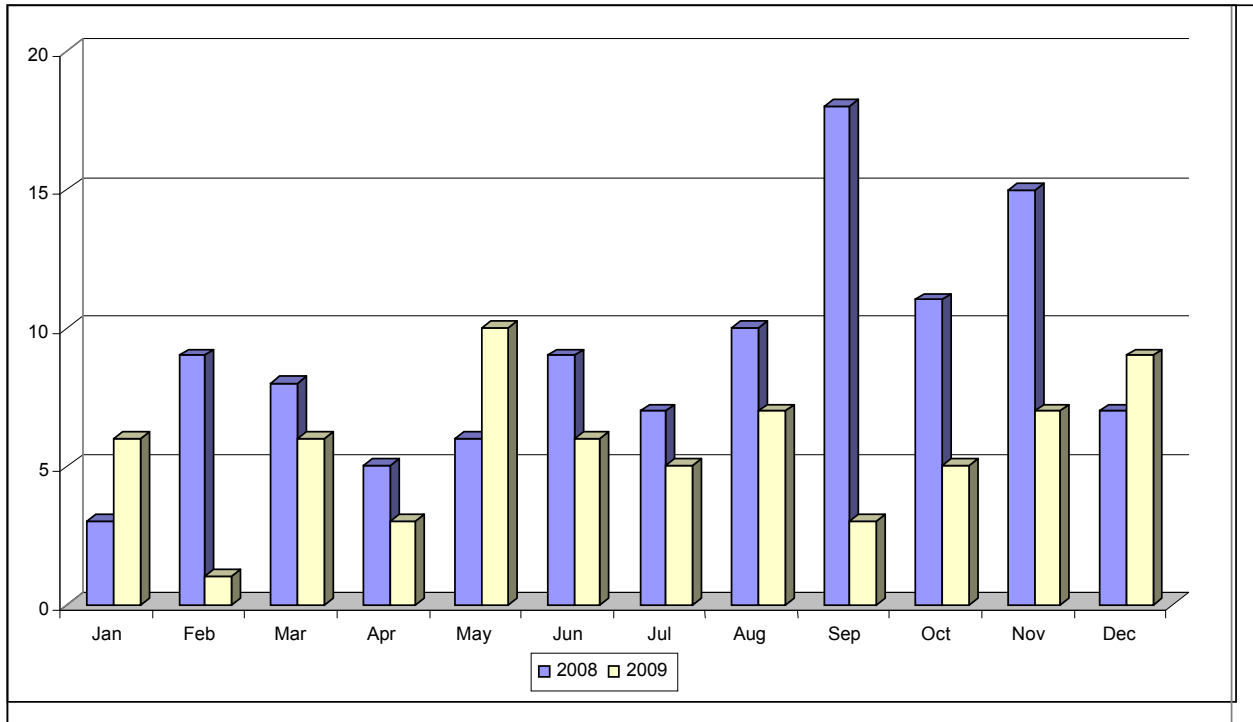
## 6.5 Safer Custody Statistics

6.5.1 305 reports were submitted to the Safer Custody Officer during the year. Forty of these were Bullying Information Reports and 131 were Security Information Reports. There were 39 anti-bullying investigations carried out.

## 6.6 Self Harm

6.6.1. 68 referrals were made to the Safer Custody Officer related to prisoners at risk of self harm.

6.6.2.

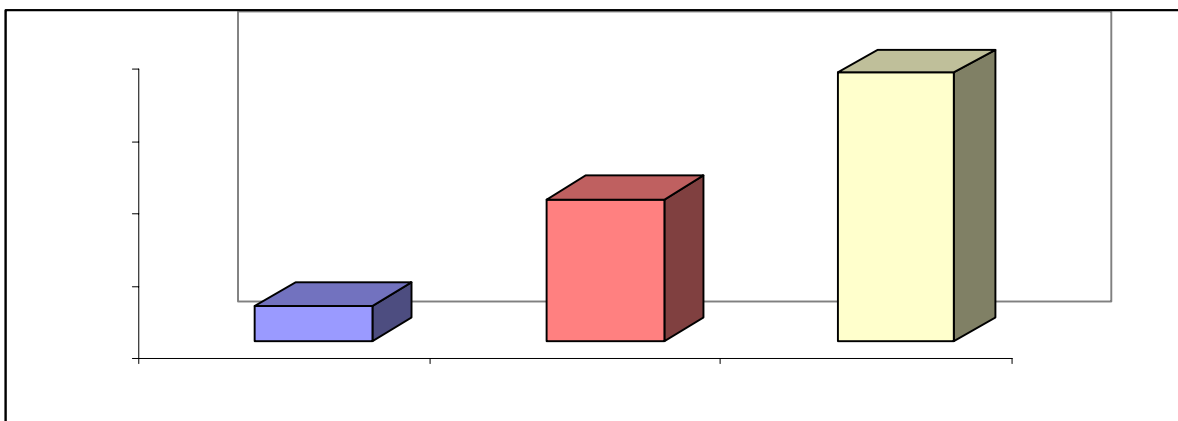


## 7 DRUG & ALCOHOL PRISON SERVICES

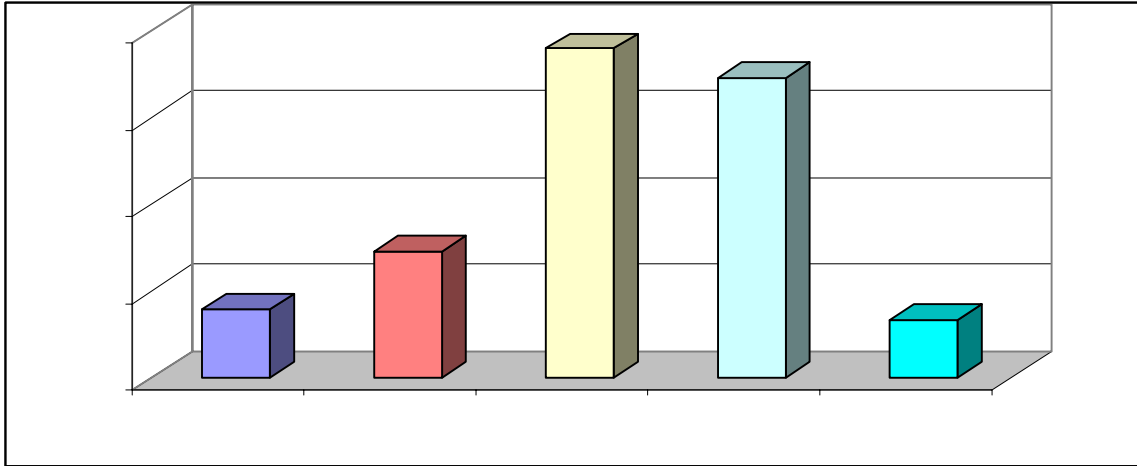
7.1 The DAPS team made contact with every prisoner on induction and was able to offer a comprehensive assessment.

7.2 In addition to one to one work, 3 validated courses for specific needs were offered; Drugs misuse, Alcohol misuse and Cocaine/Stimulants misuse.

### 7.3 Total of One to One Interventions in 2009



#### 7.4 Total of Prisoners Attending Group Interventions in 2009

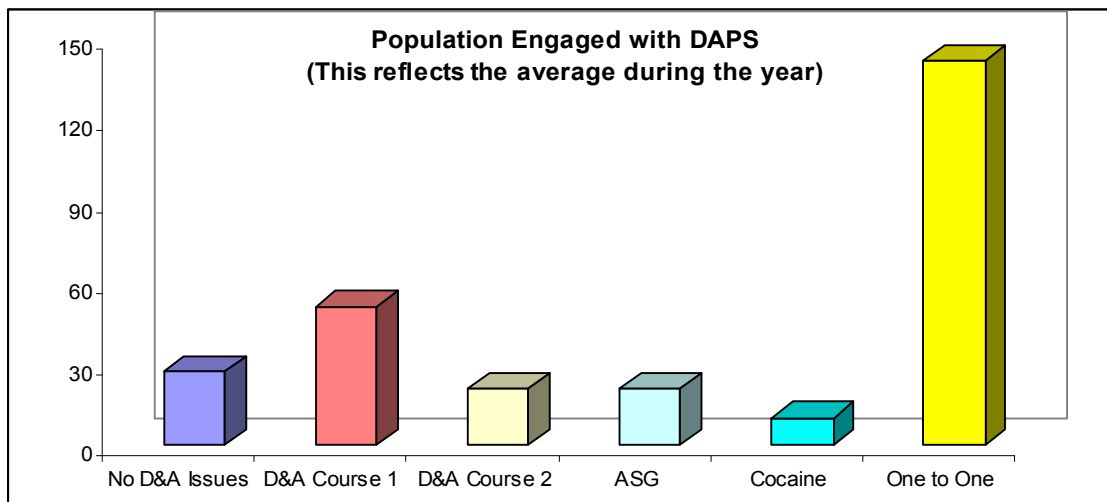


7.4.1. The above were delivered to 6 Alcohol Study Groups, 7 Drug and Alcohol Courses, 1 Cocaine Course and 2 Portuguese Groups.

7.5 All targets proposed for 2009 were achieved. This included induction for all new receptions, providing a specific course for Cocaine users, offering pre-release work to all prisoners and delivery of D&A awareness programmes to staff.

7.6 From the population at the end of the year (169 Prisoners) 142 prisoners were on the DAPS team caseload. All YOIs had engaged on one to one and group work. Of the 15 Female prisoners, DAPS worked on a one to one basis with 13, the remaining 2 did not have a drug or alcohol problem.

7.6.1.



Annex A

OFFENCE AGAINST PRISON RULE 80	Number	Dismissed	Loss of Association	Cellular Confinement	Caution	Loss of privileges	Loss of Earnings	Referral to Police
1 Commits any assault	31	5		17		5		4
5 Fights with any person	20	4	10	2	2	2		
6 Intentionally endangers the health or safety of others or by the prisoner's conduct, recklessly endangers such health or safety	5			2	2	1		
7 intentionally obstructs an officer in the execution of the officer's duty or any person, other than a prisoner, who is at the prison for the purpose of working there, in the performance of that person's work	3			3				
9 Fails (a) to return to prison when the prisoner should return after being temporarily released;	1					1		
(b) to comply with any condition upon which the prisoner is so temporarily released	9		4	1		4		
10(a) Has in the prisoner's possession, or concealed about the prisoner's body or in any body orifice, any article or substance which the prisoner is not authorized to have	143	11	55	30	10	7	26	4
10(b) Has in the prisoner's possession, whilst in a particular part of the prison, any article or substance which the prisoner is not authorized to have in that part of the prison	6	1	1	3		1		
11 Sells or delivers to any person any article which the prisoner is not authorized to have	2	1	1					
12 Sells or, without permission, delivers to any person any article which the prisoner is allowed to have only for the prisoner's own use	1		1					
13 Takes improperly any article belonging to another person or to the prison	5	1	3			1		

14 intentionally or recklessly sets fire to any part of the prison or any other property, whether or not that property belongs to the prisoner	2			1		1		
15 Destroys or damages any part of the prison or any other property other than the prisoner's own	31	3	3	16	1	3	3	2
18 Absents himself or herself from any place where the prisoner is required to be or is present at any place where the prisoner is not authorized to be	3				1	2		
19 Is disrespectful to any officer or any person, other than a prisoner, who is at the prison for the purpose of working there or who is visiting the prison	2		1			1		
20 Uses threatening, abusive or insulting words or behaviour	69	6	23	19	11	6	4	
21 Intentionally fails to work properly or, being required to work, refuses to do so	2		1		1			
22 Disobeys any lawful order	30	3	8	12	4	1	2	
23 Disobeys or fails to comply with any rule or direction applying to a prisoner	6	4	1		1			
28 Commits any indecent or obscene act	1							1

**2009 Examination/Assessment results**

Literacy assessments completed	50	Numeracy assessments completed	50
Literacy - Entry Level 1	0	Numeracy - Entry Level 1	0
Literacy - Entry Level 2	0	Numeracy - Entry Level 2	4
Literacy - Entry Level 3	7	Numeracy - Entry Level 3	12
Literacy - Level 1	28	Numeracy - Level 1	19
Literacy - Level 2	15	Numeracy - Level 2	15
		Numeracy Level 3	2

**Prison Education Trust (PET) Open**

Learning Courses	19
Open University (OU) Courses Funded	8
Funded by ACET	15
Number completed or still supported on Open Learning programmes	37

OCN Level 2 Art (Materials Exploration)	21
OCN Level 2 Art (Painting: surface form)	7
OCN Level 1 Healthy Eating	1
OCN Level 1 Operate a Computer	30
OCN Level 1 Word Processing	4

Introduction to Cricket	12
Introduction to Football Coaching	16
Introduction to French	9
Introduction to Spanish	3

<b>Vocational Training Courses – City and Guilds Level 1</b>	Unit Passes	Completed all Level 1 units	Completed 2 of the life skills units
Carpentry	128	26	32
Decorating	141	30	22
Blockwork	115	20	11

**ECDL INFORMATION**

Level 1 passes	28
Level 2 passes	2

**ADULT LITERACY**

Adult Literacy Level 1 Passes	11
Adult Literacy Level 2 Passes	7
Adult Numeracy Level 1 Passes	19
Adult Numeracy Level 2 Passes	56
Adult Numeracy Level 2 Passes	2
ESOL examinations passed	
PET	2
BEC	1
First Certificate in English (FCE)	2
Certificate in Advanced English (CAE)	2
Skills for Life (completed awards)	64